

GAME BOY COLOR

POKÉMON

Gotta catch 'em all!



DIAMOND VERSION



EVERYONE

E

CONTENT RATED BY
ESRB

DIAMOND
CRYSTAL

2 IN 1

UC-2W04



POKÉMON

Gotta catch 'em all!

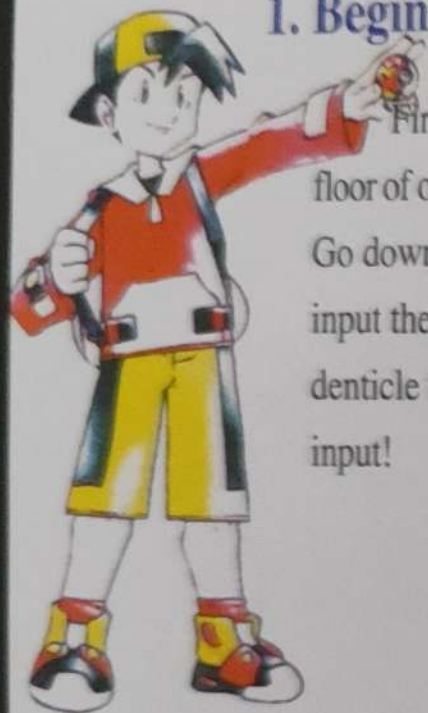


CRYSTAL VERSION

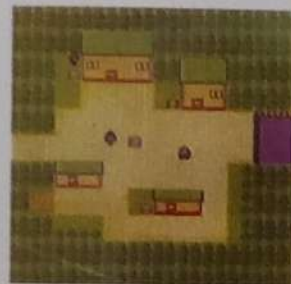
Nintendo

ONLY FOR
GAME BOY
COLOR

1. Begin the journey

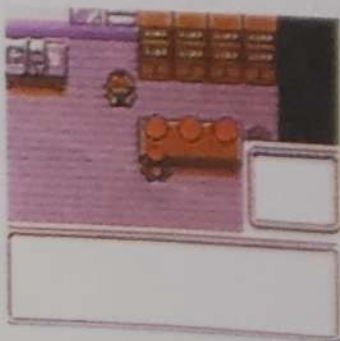


First it is in the second floor of own house, own room, Go down to the first floor to input the week, Take the denticle from mother and input!



2. Choose one from three

In the graduate school of WUQI Dr. about little monster, you only choose one to become your Fellow. The grassy CILIDA, the fire LOLOASHI, the watery WALIZI, Which do you like?



1

3. The old man to lead the way

While going into the street, you can see the old man standing someone knows the thing, and someone invites him to lead the way, invite him to lead the way to see the equipment!



30 30 The highway 4 5

In the little monster's.....

Go straight to the north and pass the thirtieth highway, there is the little monster's house, the little monster and KEQIDO Dr. inside.

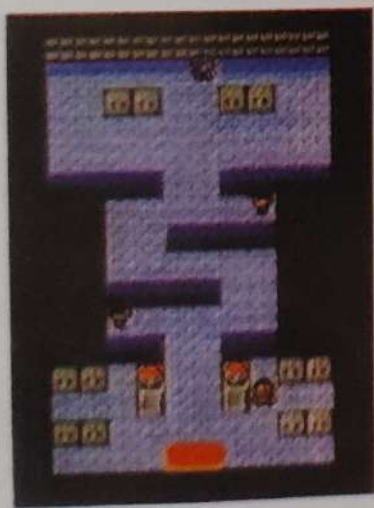
30 HAOLUO City 6 7

The stolen little monster
Go across the little monster's house, WUQI Dr. rings up, he wants to HAOLUO City the youth with red hair appears!

2

11 The guru fighting at the QIQU training field

The badge gained	The wing badge
The force of the badge	Improve the attack force of little monster, and use the "flash" anytime
The attract gained	31 mud ora



The guru fighting at the QIQU Training field

For the electric little monster isn't in, it is effective to the flying monster, But for the common level player, there isn't such kind of little monster.

Within the training field

The commendatory there, YIHUAKU(gain for the exchange with the coach)and YISICKUJI(gain in the dark hole), the flying monster is afraid of the rock attract beside the rock.

Keep the little monster egg

The means to win BAYE: to go to the center of little monster, where the assistant of Docter is waiting to take the egg, there give it him quickly, before giving, go with it for the moment and after giving a little monster will give birth, then go to the graduate school of WUQI Dr, with it.

!The tail of YEDUN?

There is a man to buy the tail of YEDUN before the center, the price is one million yen !
Leave him alone.

▲ So much money, no!



! gain the PoLo fish rod

it is the fishing old man that stands in the center,
Greet him and you may gain the PoLo fish rod and
fish the watery little monster,

▲ Where there is water, where you can fish!

Who is the prisoner to cut off the tail of YEDUN?

If you go to the old man HANJI'S, he will fire up and run out to YEDUN'S. following him you will look at his fellow with black clothes, It is the missile group? They relive?

!There the grassy monster is dangerous.

The wormy monster can deal with the fire attract, if beginning from PILUOASHI, you can use the fire attract, But it is better to challenge with flying attract.

But for the opponent is very strong, if you improve your level, it's no problem to win.

Operating Instruction for PokeMon-Diamond

《PokeMon-Diamond》 leads players stepping into a marvelous monster world to experience the fantastic adventure. Do not forget taking the mobile with you. Are you ready? Let's go!

I . Brief introduction

While people discover the way to go through Dark Curtain and come into the called Monster World, they find it is a dreadful place for lives. To survive, monsters attach great importance to the D-shooter by which they are capable of communicating with their friends. However, number of monsters having violent temper is increasing, whoever are not stronger than himself will not be accepted as friend. Therefore, there are so little to be a friend. Battles among monsters called as Phonecall.

Whether the Monster World could be a peaceful and beautiful world, all that depends on your talent. If any help is wanted, please call your monster friend at any time, who is likely to help you. All commits to your care.



Operating Instruction for PokeMon-Diamond

II . Operating introduction

A. Start Menu:

At the beginning, press "start" or "A" to step into the start menu. Use "up" and "down" key to select, "A" for confirmation. There are four alternatives for operation.

1. Start: decide the time to start before a new game, the "up" and "down" key is to confirm the time; "A" or "B" for choosing hour and minute, (different time will lead to the different show-up of monsters). If record exists, whether or not overwrite the original one and start a new game have to be decided, (please pay attention when making choice)

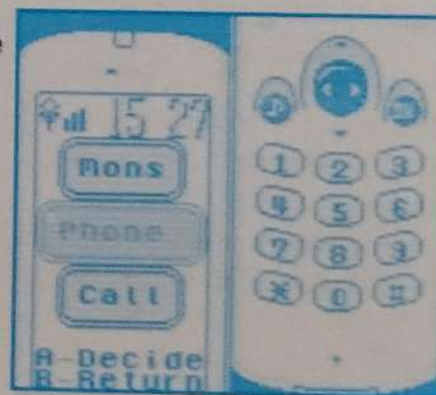
2. Continue: continue the game from where it is saved.

3. Sound: by this option , 39 pieces of music and 115 key sounds could be heard. After clicking "direction", then hit "A" key, music sounds.

4. Communication: this game could do communicative battle, and could exchange monsters as well.

B. Game Menu

During the game, press "select" to transfer to game menu, "up" and "down"key for choice; "A" for confirmation; "B" for return. The game menu have nine alternatives for operation, including:



Operating Instruction for PokeMon-Diamond

1. Phone: by the "left" and "right" key, one could know the detailed status of the monster he has. Continue to click "A" to transfer to sub-menu, which includes:

a. Dial, one could communicate with the monster and call him back when necessary.

B. Delete, one gives up the monster he has (it is better to make more friends)

c. Music, clike "up" and "down" key for option, when select "right", music will be heard, (each monster has its according music)

2. Calls: one saves the latest eight calls from monsters so as to check at any time.

3. Music: all pieces of music could be heard.

4. Property: one could see the properties he has, click "A" to use the properties.

5. Mail: while not able to receive signals from monsters, one could communicate them by mail.

6. Save: to save the current game process so as to continue the game at any other time. Each save implies the overwritten of previous process.

7. Option: of which, Magic, Clock, Flash could be chosen to show up or not by "left" or "right". Color is to additionust the color of the dialog box by "left" or "right". There are four choices.

8. Mons: one could know the introduction of monsters shown up. (It is allowed to continue to collect Mons after accomplishing task.)



Operating Instruction for PokeMon-Diamond

9. Return: to exit the game menu.

Provided one wants to communicate directly with monster, please write down its phone number first, then press "select" to dial, press "direction" to choose number, press "A" to input the number, then the monster will be happy to make friends with you.

III. If one wants to know where he is, press "start" during the game process, then he could see a map on which the flashing point indicates his location. Continue to press "A", the placename will be shown as well.

IV. During the game, press "left" or "right" and "B" simultaneously, one would run, when he runs into grass land, the grass will be divided into two parts from where unexpected discover shows up. Try right now!



V. While being in the fighting situation, one can choose one or two monsters for each time to fight side by side. Press "direction" to select, "A" for confirmation. If one decides to fight in isolation, simply press "B" is ok.



POKÉMON

DIAMOND CRYSTAL

2 IN 1

ONLY FOR
NOT COMPATIBLE WITH
OTHER GAME BOY SYSTEMS!



Game play on the Game Boy®
Color video game system.
(Displays up to 56 colors.)

Gotta catch even more!

Enter a whole new world, with new Pokémon to capture, train and battle! Meet Professor Elm and get the all-new Poké Gear, including map, radio, cell phone and clock. Set the clock then watch as day turns to night and events take place in real time—and be sure to keep an eye out for Pokémon that come out only at night!

- Dozens of never-before-seen Pokémon! Find new evolutions for some familiar Pokémon and discover whole new species. Your Pokédex will even reveal genders of some Pokémon.
- A whole new world! Explore Johto, where there are new gym leaders to beat and eight new badges to earn.
- Two new types! Introducing Dark- and Steel-type Pokémon.
- Trade with Silver, Red, Blue, and Yellow versions to catch 'em all!
(Requires Game Link® cable, sold separately. New Pokémon cannot be traded back to Red, Blue or Yellow versions. **Not compatible with Pokémon Stadium.**)
- Compatible with Pokémon Pikachu™ 2 GS!



Game play on the Game Boy®
and Game Boy® pocket systems.

DMG P AAUE



Nintendo®

THIS OFFICIAL SEAL IS YOUR ASSURANCE THAT NINTENDO HAS APPROVED THE QUALITY OF THIS PRODUCT. ALWAYS LOOK FOR THIS SEAL WHEN BUYING GAMES AND ACCESSORIES TO ENSURE COMPLETE COMPATIBILITY.

© 1995-2000 Nintendo/Creatures inc./
GAME FREAK inc.
TM, ® and Game Boy Color are
trademarks of Nintendo of America Inc.
© 2000 Nintendo of America Inc.